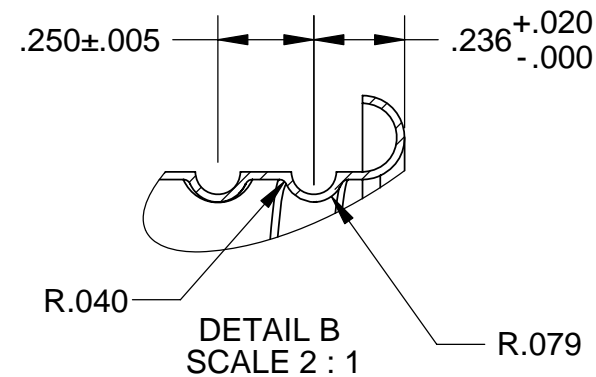
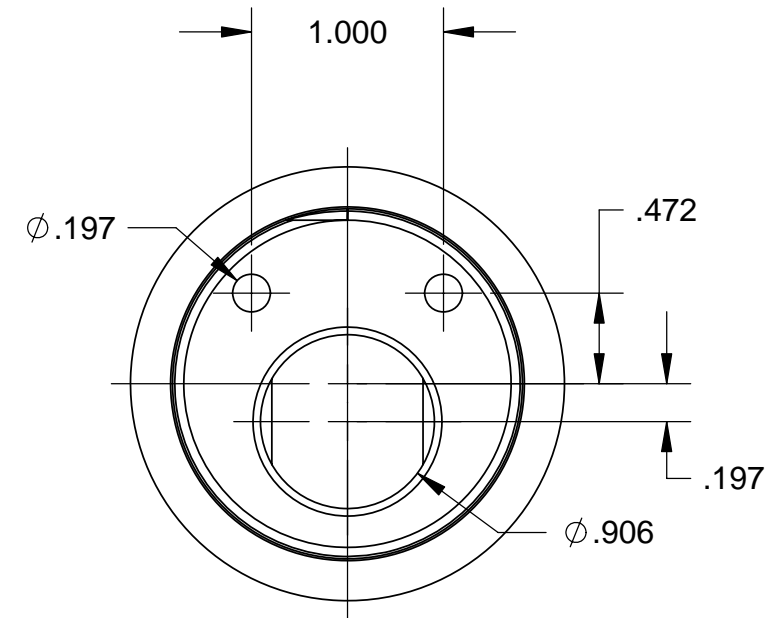
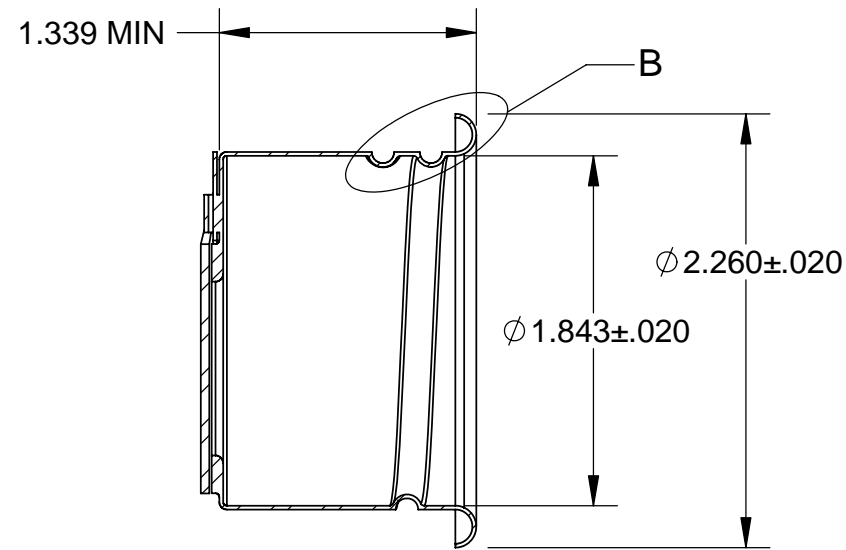
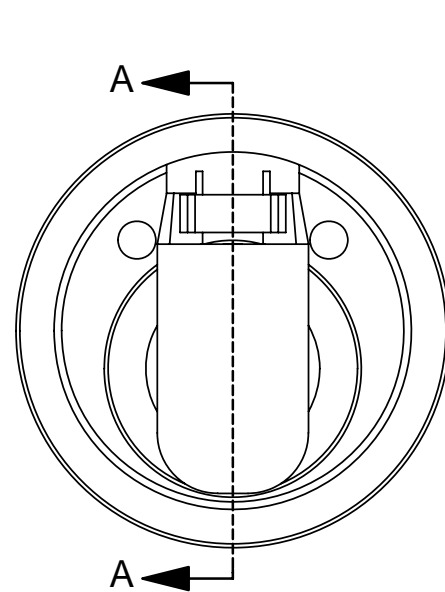


REVISIONS

REV.	DESCRIPTION	DATE	APPROVED
A	RELEASE FOR PRODUCTION	8/22/2006	
B	ADDED MATERIAL AND FINISH	12/12/2006	



- 3. PER SAE-J1114 SPEC, 1.6"L
- 2. ALL DIMENSIONS ARE FROM PUNCHED SIDE AND ARE PRIOR TO PLATING/FINISHING.
- 1. MUST BE FREE OF BURRS & DIE SCRATCHES.

NOTES: UNLESS OTHERWISE SPECIFIED

<b>UNLESS OTHERWISE SPECIFIED</b>		INFORMATION AND DATA SET FORTH HEREIN ARE DISCLOSED IN CONFIDENCE AND ARE PROPRIETARY TO AND THE PROPERTY OF LEBOW-EATON CAPS & NECKS AND SHALL NOT BE USED, DUPLICATED, DISCLOSED OR TRANSFERRED, IN WHOLE OR IN PART, FOR ANY PURPOSE, WITHOUT THE EXPRESS PRIOR WRITTEN CONSENT OF LEBOW-EATON CAPS & NECKS.																							
REMOVE BURRS AND SHARP EDGES: .005-.015		DIMENSIONS AND TOLERANCES PER ANSI Y14.5 UNLESS OTHERWISE SPECIFIED, DIMENSIONS ARE IN INCHES, TOLERANCES ARE:		<b>THIRD ANGLE PROJECTION</b>																					
MAXIMUM INSIDE RADI: MATERIAL THICKNESS		DECIMALS: .X ±.04 .XX ±.02 .XXX ±.010																							
MAXIMUM OUTSIDE RADI: 1.5X MATERIAL THICKNESS		ANGLES: X° ±1° X.X° ±1/2°																							
PERPENDICULAR SURFACES TO BE WITHIN: .017		TOL <math>\phi</math> TO <math>\phi</math>: ±.010 TOL ON HOLE <math>\phi</math>: ±.005 FLATNESS TOL: .005", INCH T.I.R.		<table border="1"> <tr> <th colspan="2">APPROVALS</th> <th>DATE</th> </tr> <tr> <td>DRAWN</td> <td>E.GARCIA</td> <td>8/22/2006</td> </tr> <tr> <td>CHKD</td> <td>E.GARCIA</td> <td>12/12/06</td> </tr> </table>		APPROVALS		DATE	DRAWN	E.GARCIA	8/22/2006	CHKD	E.GARCIA	12/12/06											
APPROVALS		DATE																							
DRAWN	E.GARCIA	8/22/2006																							
CHKD	E.GARCIA	12/12/06																							
MATERIAL: 19 GAGE C.R.S. (B)		MATERIAL THICKNESS: ±.006		<table border="1"> <tr> <td colspan="4"> </td> </tr> <tr> <td colspan="4">20630 Plummer St, Chatsworth, CA. 91311</td> </tr> <tr> <td colspan="4">Tel: (818) 701-2750</td> </tr> <tr> <td colspan="4">Fax: (818) 701-2799</td> </tr> <tr> <td colspan="4">www.capsnecks.com</td> </tr> </table>						20630 Plummer St, Chatsworth, CA. 91311				Tel: (818) 701-2750				Fax: (818) 701-2799				www.capsnecks.com			
20630 Plummer St, Chatsworth, CA. 91311																									
Tel: (818) 701-2750																									
Fax: (818) 701-2799																									
www.capsnecks.com																									
FINISH: GALVANIZED (B)		DO NOT SCALE DRAWING		<table border="1"> <tr> <th colspan="4">TITLE: FUEL INSERT WITH FLAPPER</th> </tr> <tr> <td>SIZE: B</td> <td>CODE IDENT. NO: 52158</td> <td>DWG. NO: NJ-507090</td> <td>REV: B</td> </tr> </table>		TITLE: FUEL INSERT WITH FLAPPER				SIZE: B	CODE IDENT. NO: 52158	DWG. NO: NJ-507090	REV: B												
TITLE: FUEL INSERT WITH FLAPPER																									
SIZE: B	CODE IDENT. NO: 52158	DWG. NO: NJ-507090	REV: B																						
				SCALE: 1:1 SHEET 1 OF 1																					